

Efficient solution for network lifecycle monitoring and field activity management



SITE EXPLORER is a highly efficient centralized tool for network databases management and field operations monitoring, allowing a great improvement in productivity, efficient network control and a very significant cost reduction.

- Network database management
- Field operation management and monitoring
- PMO (process management, contract/PO management, invoicing management...)

SITE EXPLORER allows the real-time monitoring of field operations, the relevance of operations, the optimization of intervention times, the increase in team productivity and also a significant reduction in overall operating costs. The tool is an adequate solution for dematerialization and information exchange between teams and departments allowing a great reduction of OPEX thanks to the quick integration of the solution, the easy connectivity with existing solutions and easy adaptability to any project and customer processes.

Network database management:

This module allows the management of network database including:

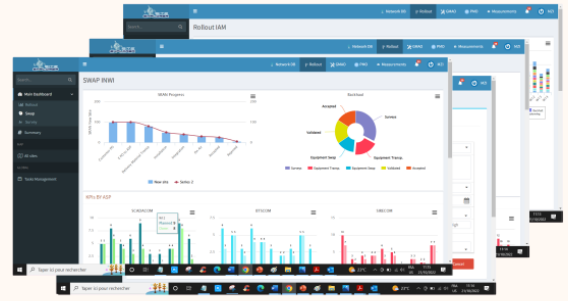
- Network elements and their relations
- Elements administrative documents
- Element technical documents
- Technical history
- Network contracts with subcontractors/suppliers
- Teams and subcontractor operations and efficiency calculation
- Consult, edit, modify and generate management and technical reports



ROLLOUT :

This module allows the management of rollout projects and real-time monitoring of all element, task and teams

- Real-time project progress through advanced dashboards
- Rollout contract and purchase order management
- Real-time field operations monitoring
- Task material management
- Management of teams and subcontractors
- Acceptance management
- Cost and budget control and invoicing
- Rollout KPI calculation and reporting



CMMS:

CMMS module allows the complete management of maintenance projects with offering a total visibility of all network elements and all field operations. It allows:

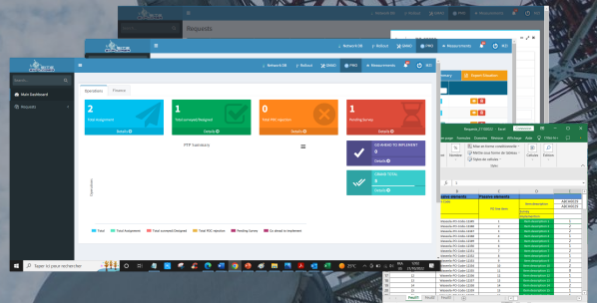
- Real-time project progress monitoring through advanced dashboards
- Element management
- Maintenance management
- Real-time maintenance operations monitoring
- Planning management
- Cost and budget control and invoicing
- MTBF and MTTR calculation for each element/incident type
- Maintenance KPI calculation and reporting



PMO:

PMO module allows process and financial management of the projects with providing:

- Process definition and control
- Registration of administrative documents for projects
- Resource allocation
- Customer and subcontractor contracts management
- Purchase order and invoicing management
- Budget control



SITE EXPLORER has a mobile version dedicated to field agents, allowing full visibility and control of the processing of operations in the field.

- Management of interventions
- Calculate time and performance of operations
- Check list
- Reporting



Tel : + 212 5 37 712 071
Mail : contact@ingecys.com
Adresse : Rue Acacia, Secteur 18, Bloc F4, N°6
Hay Ryad-RABAT MAROC